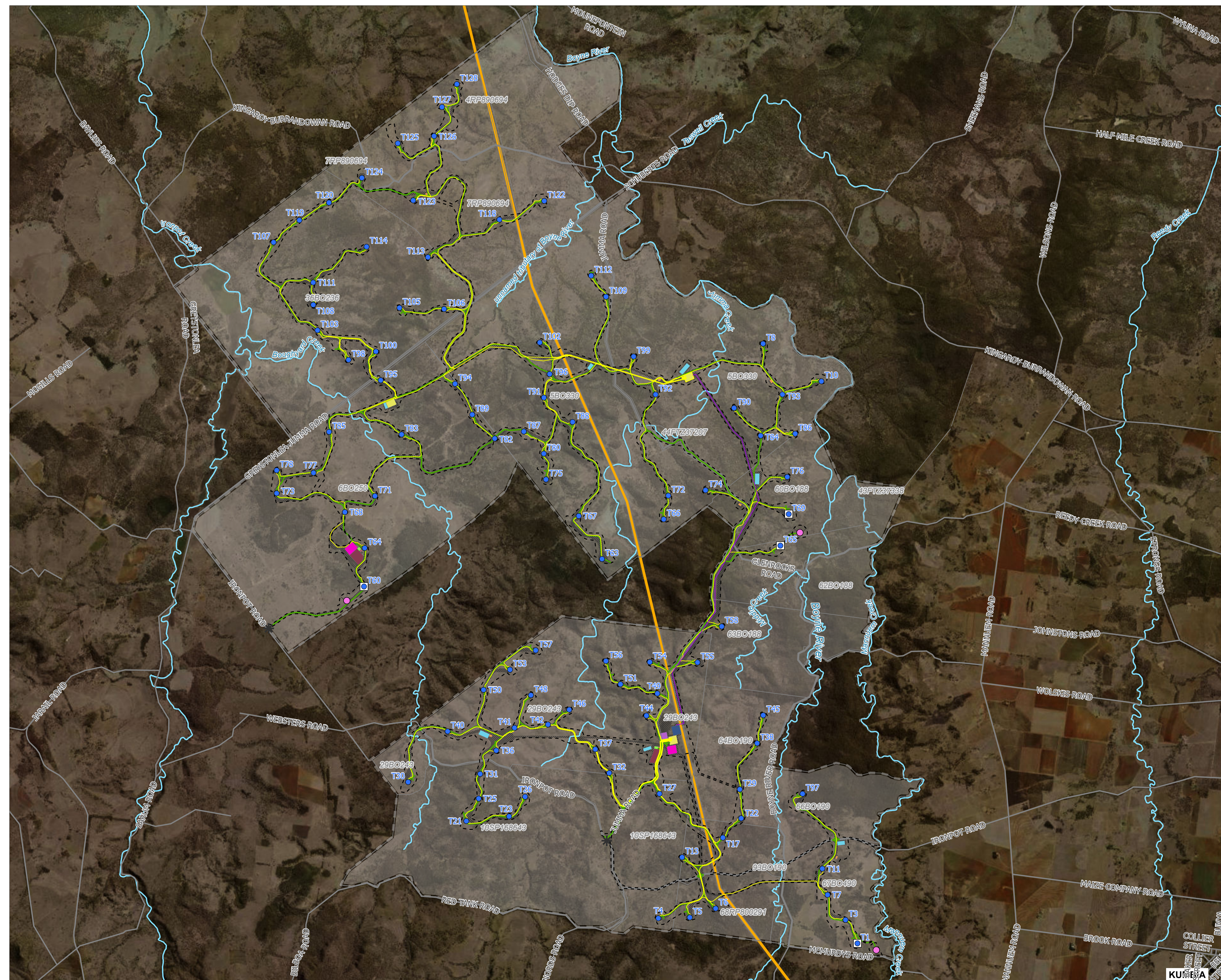




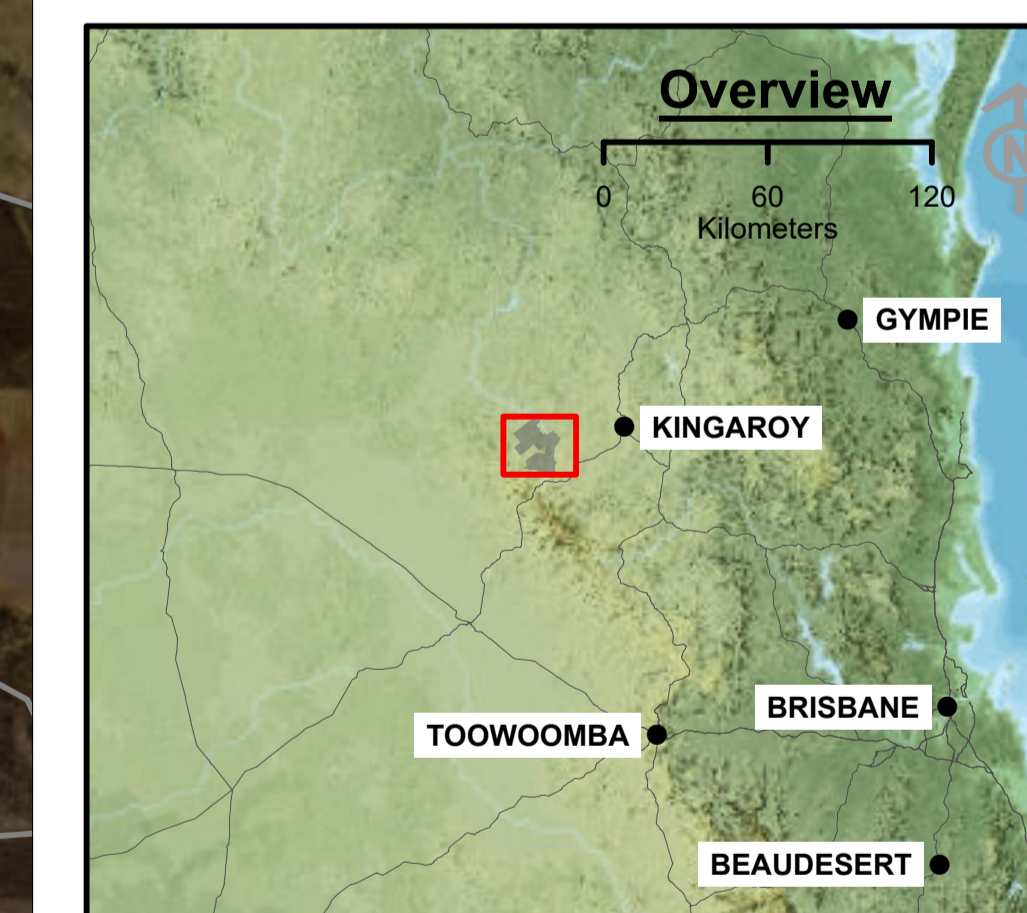
TARONG WEST WIND FARM

Project Layout and Design



Legend

- * Site Access
- Turbine
- Meteorological Mast (Permanent)
- Meteorological Mast (Temporary)
- Watercourse
- State Controlled Road
- Roads
- Access Track
- Existing Powerlink 275kV Overhead Line
- Proposed 275kV OHL
- 33kV Reticulation
- BESS Area
- Batch Plant
- Collector Station
- Laydown
- O&M Building
- PLQ Switching Station
- Site Compound
- Substation
- Washdown Area
- Site Boundary
- Cadastral Boundaries
- Planning Corridor
- Clearing Footprint



© AECOM Australia Pty Ltd (AECOM). All rights reserved.
 AECOM has prepared this document for the sole use of the Client and for a specific purpose, each as expressly stated in the document. No other party should rely on this document without the prior written consent of AECOM. AECOM undertakes no duty, nor accepts any responsibility, to any third party who may rely upon or use this document. This document has been prepared based on the Client's description of its requirements and AECOM's experience, having regard to assumptions that AECOM can reasonably be expected to make in accordance with sound professional principles.
 © State of Queensland (Department of Resources) 2022. © The State of Queensland. © Commonwealth of Australia. Based on ABS data. Bureau of Meteorology. © CSIRO Australia

**TARONG WEST WIND FARM
 PLANNING REPORT**
**Material Change of Use
 Proposal Plan**
 Figure 2.1